



The QUEEN series UPS, provides high performance but inexpensive power protection solution for most business applications with critical file servers, network switches, hubs and small computers. The QUEEN series is available in a variety of models: 1000VA – 1500VA – 2000VA and 3000VA.

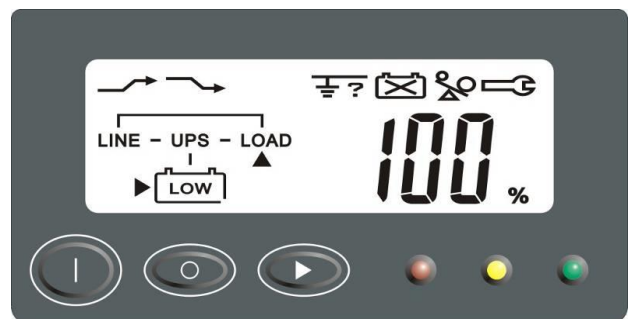
**PRINCIPLES OF WORKING**

In normal condition, the load is fed by a stabilized line with the automatic AVR and filtered by over voltages with EMI filters. In mains failure condition, the QUEEN series UPS feed the load with a sinusoidal wave through the battery energy; the software, included in the envelope, controls the planned system shutdown. If an overload or a fault occurs, the electronic by-pass provides not to cut the users feeding.

**FEATURES**

- Sine wave output
- Nearly zero transfer time
- User friendly LCD display for measurements and alarms
- 97% high efficiency in normal mode and reduces noise and heat generated by other topology UPS
- AVR Boos & Buck. Automatically corrects either under or over voltage condition without unnecessary battery drain and extends the battery's life
- Easy swappable battery function
- Advanced battery management prevents deep discharge of the built-in battery during a power failure
- Cold start function. Enables to turn on the UPS without connecting to the Utility
- Plug & Play design
- RS232 and USB communication interfaces

**CONTROL PANEL**



LED  
Utility Normal, Backup Mode, & Fault

LCD with White Backlight Bypass, Boost, Buck, UPS, Battery Low/Replace/Fault, Site Wiring Fault, Overload, UPS Fault, Load Level, Battery Level

Keypad  
Turn-on/Alarm Reset/Self-test, Turn-off, Reading Scroll



**INTERFACES**

The QUEEN series UPS is provided with two standard interfaces:

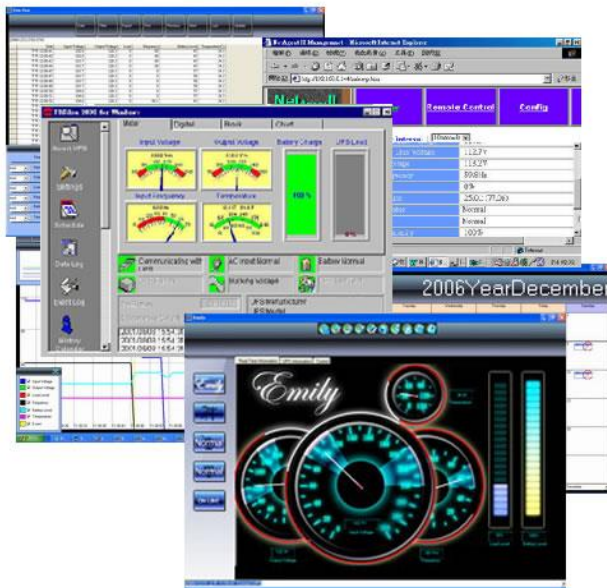


**Standard serial RS 232**

The smart port is an intelligent RS232 serial port that allows the UPS to a computer. The connector is a standard D-Type, 9 pin, female.

**USB port** for remote signaling and automatic computer shutdown.

The optional software allows the computer to monitor the mains voltage and the UPS status continuously.



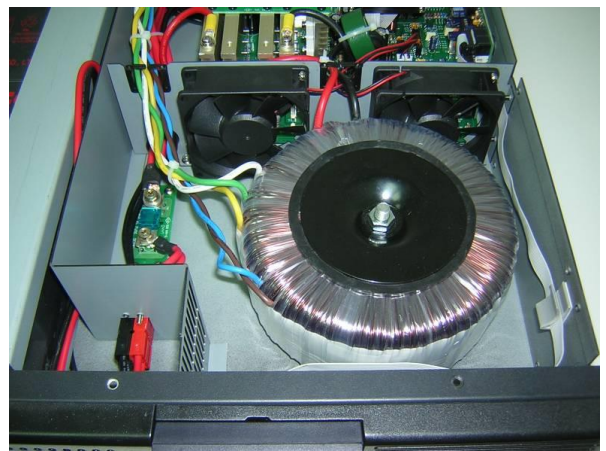
The software is compatible with many operating systems such as Windows 98, 2000, XP, Vista and Windows 7 For other applications like Novell, NetWare, Unix, Linux, please contact your local distributor for a proper solution.

**TOROIDAL TRANSFORMER TECHNOLOGY**

The QUEEN series UPS supply a pure sine wave output, filtered and stabilized with AVR boost and buck. This technology includes a

transformer connect in series with mains and users fed, allowing to the UPS not only to protect the users from mains fault but even to clean the line from voltage sags and over voltages.

- Toroidal transformer technology: (only for rack mount solution)
- High Efficiency
- Advanced Voltage Regulation
- Perfect Output Waveform
- Quiet Operation
- Slim Style



**REAR PANEL**

- 6 x Backup Outlets
- Output Breaker
- Input Fuse
- 1 x RS-232
- 1 x USB
- LAN Protection
- Output Configuration Dip Switch



Model	QUEEN1000	QUEEN1500	QUEEN2000	QUEEN3000
Rated power VA/W	1000/600	1500/900	2000/1200	3000/1800
<b>INPUT</b>				
Voltage	220/230/240V ± 25% single phase settable with deep switch			
Frequency	50Hz or 60Hz ± 5% autosensing			
<b>OUTPUT</b>				
Voltage AC mode	230V ± 15% single phase			
Voltage INV mode	230V +3% -10% single phase			
Frequency	50Hz or 60Hz ± 0.2%			
Wave form	Sine wave			
Voltage distortion	< 3% linear load			
Transfer time	4-6 ms typical			
DC start	Yes			
<b>BATTERY</b>				
Type	Sealed Lead Acid maintenance free			
Recharge time	2 ~ 4h at 90%			
Battery voltage	24Vdc		48Vdc	
Capacity	2x 7Ah	2x 9Ah	4x 7Ah	4x 9Ah
<b>PROTECTIONS</b>				
Overload AC mode	> 110% Buzzer continuously alarms & shuts down after 10 minutes			
Overload inverter mode	> 120% Buzzer continuously alarms & shuts down after 10 seconds			
Short circuit AC mode	Input fuse & Electronic circuit			
Short circuit inv. mode	Inverter shutdown immediately			
<b>MISCELLANEOUS</b>				
Efficiency	> 97% AC mode			
Signaling & commands	LED: Utility Normal, Backup Mode, UPS fault and battery's conditions LCD Measurements: Load Level (%), Battery Level (%), LCD Sign: Bypass, AVR Boost/Buck, Battery Low/Replace/Fault, UPS Fault, Site Wiring Fault, Overload Keypad: Turn-on/Alarm Reset/Self-test, Turn-off, Reading Scroll			
Relative humidity	20%-90% without condensing			
Operating temperature	from 0°C to + 40°C			
Interfaces	RS232 & USB			
Compatible platforms	Microsoft Windows series, Linux, Mac, etc			
Lan protection	RJ11/45			
Input plug	1 x IEC 10A			
Output sockets	6 x IEC-320-C13			
Dimensions (mm)	173x369x247		173x427x247	
Weight (kgs)	13	15	22	24
<b>STANDARDS</b>				
Safety	EN 62040-1			
EMC	EN 62040-3, EN 61000-3-2, EN 61000-3-3			
Marks	CE			

ELIT Srl reserves his right to do modifications to his products without notice.